

## MUSEUM OF ROYAL WORCESTER DESIGN ACTIVITY

### *Worcester porcelain and the Arts of Islam*

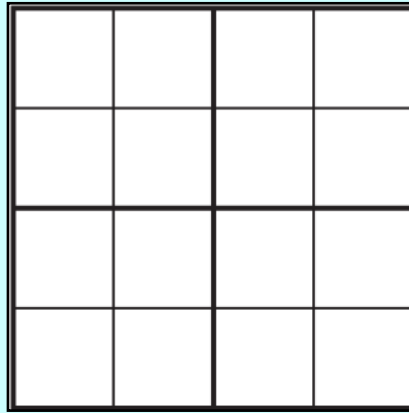
The Museum of Royal Worcester is home to a stunning collection of objects and archive material which find their inspiration from the arts and cultural traditions of West and South Asia in the 19th and 20th centuries.

The artists at Worcester's factories seemed to borrow a number of the Islamic design rules including: **the invisible grid, symmetry** and **tessellation**.

Find out about these design rules, and then have a go at creating your own pattern.



### (1) THE INVISIBLE GRID



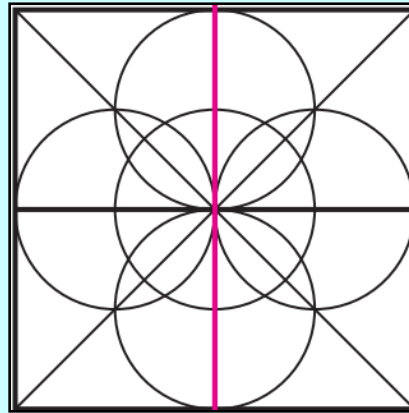
Every geometric pattern starts with an 'invisible' grid that acts as a guide for the design.

The diagram to the left shows an example of a simple invisible grid made up of squares, however they can use more complex shapes.



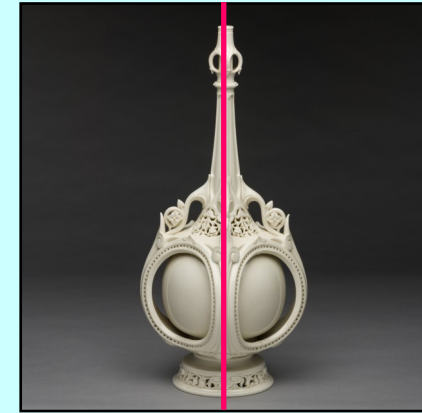
The pattern on this stunning plate from the Museum of Royal Worcester's collection follows a simple invisible grid structure.

### (2) SYMMETRY



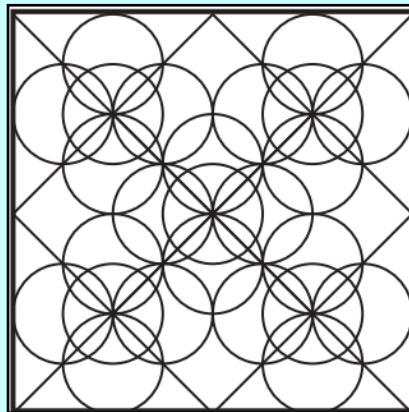
Symmetry is a key part of traditional Islamic design. Something is symmetrical when it is the same on both sides of a dividing line.

The diagram to the left shows a geometric pattern that is symmetrical, shown by the **pink** dividing line.



This beautiful vase from the Museum of Royal Worcester's collection has perfect symmetry, shown by the **pink** dividing line.

### (2) TESSELLATION



Tessellation is when a pattern is repeated, to create an even larger design. Craftsmen have used this rule for centuries to work efficiently.

The diagram to the left shows a geometric pattern that has been tessellated (repeated).



This gilded plate from Chamberlain's Worcester porcelain factory has a tessellated pattern, with a central point.

## YOUR TURN!

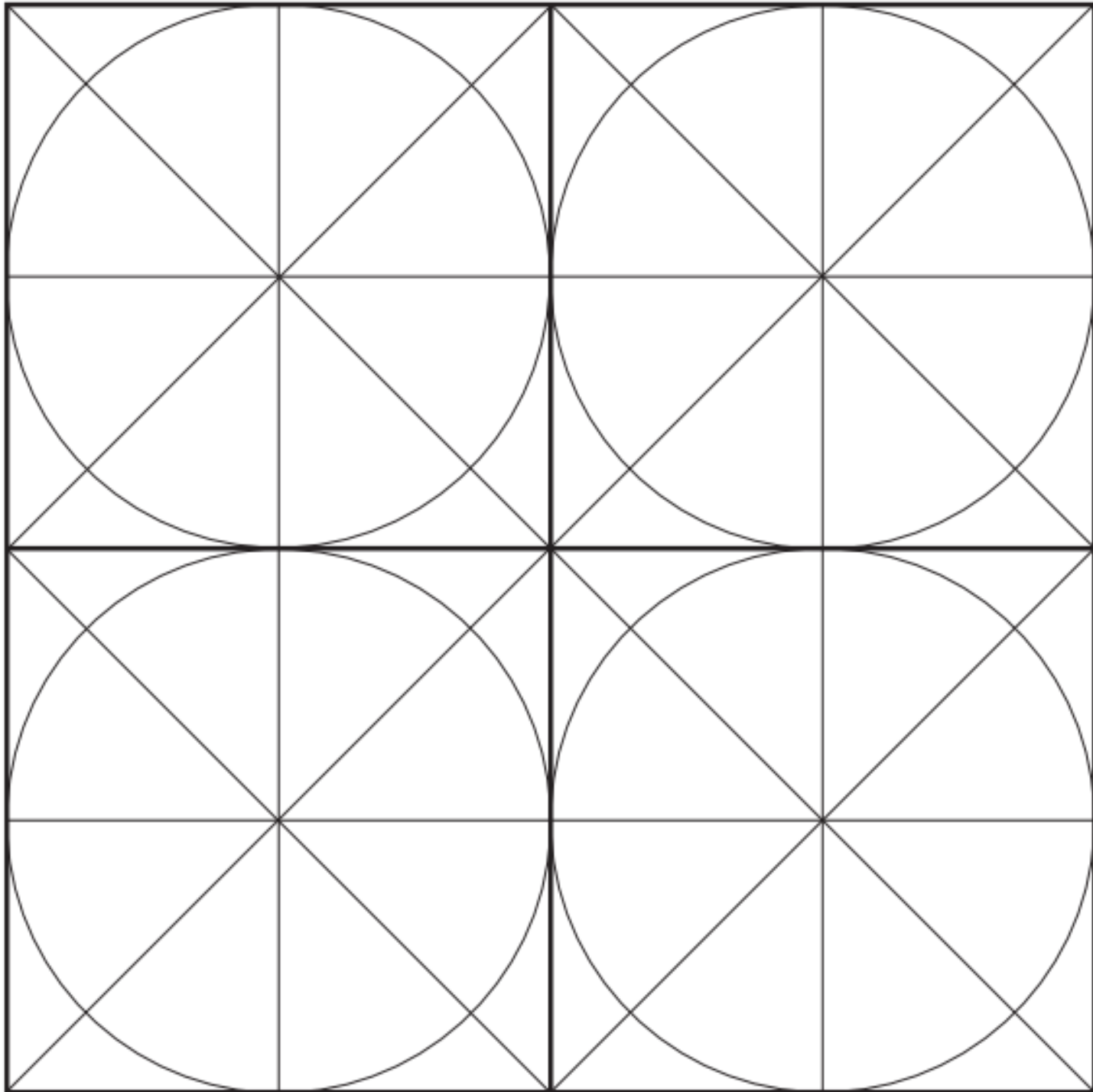
*It's time to design your own geometry!*

We think you're ready to create your own pattern! You'll need a pencil and maybe a ruler. Remember the key Islamic design principles and have fun.

If you have visited the Museum, use the objects on display in *Worcester Porcelain and the Arts of Islam* to inspire you!



When you're happy with your pattern, we'd love to see it. Send it to us at [info@museumofroyalworcester.org](mailto:info@museumofroyalworcester.org) or post it to our Facebook page @TheMoRW.



**MUSEUM OF  
ROYAL  
WORCESTER**

'Royal Worcester' and the C51 crown device are registered by and used under kind permission from Portmeirion Group UK Ltd to whom all rights are reserved.

MoRW is a registered charity No. 223753

With thanks to Molly Shand for creating the elements of this worksheet for the Museum. Images are © Museum of Royal Worcester.